



**Benton
County**
OREGON

Biennium Report 2021-2023

Highlighting activities, achievements, and financial performance by Benton County



Letter from the Commissioners

Dear Residents of Benton County,

We are pleased to present the Benton County Biennium Report for 2021-2023, highlighting activities, achievements, and financial performance by Benton County. This report is a testament to the dedication of our staff, elected officials, community partners, and the residents of Benton County. Over the past two years, Benton County has shown resilience, adaptability, and a commitment to enhancing the quality of life of all our residents. We are delighted to share some noteworthy achievements that we have accomplished together:

COVID-19 Response and Recovery: In the face of the global pandemic, Benton County swiftly implemented measures to protect public health. We established vaccination sites, expanded testing capabilities, and provided vital resources to support businesses, individuals, and families affected by the economic impacts of the pandemic. Our successful response wouldn't have been possible without partners like the City of Corvallis, Samaritan Health Services, Oregon State University, Corvallis School District, and the amazing staff at Benton County. Our community rallied together, demonstrating compassion and solidarity during these challenging times.

Sustainable Development & Environmental Stewardship: We have made strides promoting sustainability to combat climate change, with a comprehensive Climate Action Plan, emphasizing renewable energy, energy efficiency, and sustainable transportation. These efforts have led to a reduction in greenhouse gas emissions and improved air quality. We have implemented sustainable land management practices, supported watershed restoration efforts, and engaged in conservation initiatives. Our commitment to environmental stewardship ensures future generations can enjoy the beauty and richness of our natural landscapes, and natural resources.

Housing and Homelessness: Recognizing the need to positively impact homelessness, Benton County and the City of Corvallis continue to support an advisory board called Home, Opportunity, Planning and Equity (HOPE) and regularly seek feedback from the dedicated members of this board. By collaborating with local organizations, we expanded shelter capacity, provided rental assistance programs, and streamlined the development of affordable housing units. By fostering these partnerships, we are working towards ensuring safe and stable housing options for all community members.

Infrastructure Development: Our commitment to infrastructure improvement remains unwavering. Over the past biennium, we have invested in road and bridge maintenance, enhancing connectivity. Additionally, we have focused on expanding broadband access to underserved areas, promoting digital equity, and supporting economic growth through increased connectivity.

Justice System Improvement Program: In a commitment to ensure fairness and justice, the Justice System Improvement Program (JSIP) was launched. This initiative aims to enhance transparency, equity, and community engagement within our justice system. We are collaborating with stakeholders to implement reforms that address systemic issues and promote trust and accountability. Phase 1 of JSIP implementation includes the construction of the Benton County Mental Health Crisis Center, Courthouse, and District Attorney's Office.

Mental Health Support: Recognizing the importance of mental health in our community, we have prioritized the development and expansion of mental health services. We understand mental well-being is crucial for the overall health and happiness of our community members. In collaboration with local healthcare providers and organizations, we have worked to increase access to mental health resources including increased staff capacity for counseling, therapy, and crisis intervention services. We are constructing the Mental Health Crisis Center to provide a dedicated facility for individuals in need of immediate mental health support. We remain committed to fostering a supportive and inclusive environment where individuals can seek help without stigma.

Looking ahead to the next biennium, Benton County remains dedicated to building upon these achievements. We extend our deepest gratitude to the Benton County staff, community partners, and community members for their unwavering support and collaboration in achieving our collective goals. Together, we will continue to build a prosperous, inclusive, and sustainable County.

Sincerely,


Benton County
Board of Commissioners



Xan Augerot



Pat Malone

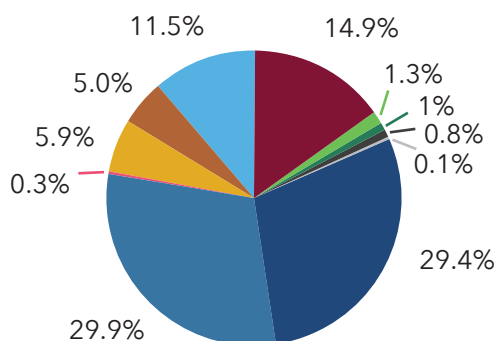


Nancy Wyse

2021 - 2023 Biennium Budget

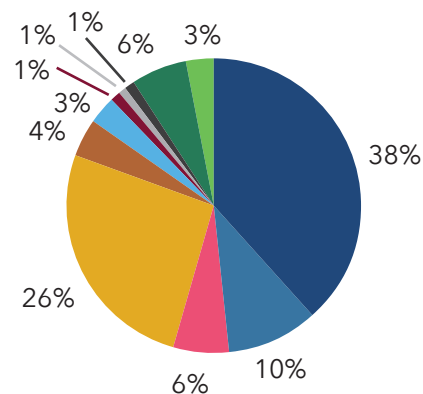
State law requires every local government to balance its budget, which means anticipated revenue cannot exceed expenses. The process of budgeting helps guide strategic planning and priorities for services. In Benton County, we budget biennially, in step with the state Legislature. This allows planning over a two-year period which provides flexibility for department leadership. We also project for the next two biennia, which helps longer-term fiscal planning.

Revenue Budget



Grants	\$123,141,459
Charges for Services	\$121,032,128
Taxes	\$61,351,505
Restricted Beginning Balance	\$47,191,615
Transfers	\$24,257,965
Unrestricted Beginning Balance	\$20,700,000
Licences / Fees	\$5,284,103
Intergovernmental	\$4,064,534
Interest Earnings	\$3,164,780
Loans	\$1,300,000
Miscellaneous	\$558,676

Expenditure Budget



General Government	\$156,656,014
Health	\$108,369,125
Public Safety	\$41,557,490
Capital Improvements	\$26,058,731
Public Works	\$25,550,102
Justice Services	\$15,014,949
Community Services	\$14,408,469
Unappropriated Balance	\$11,966,533
Parks & Natural Resources	\$5,766,184
Cultural & Educational	\$4,470,768
Expendable Trust	\$2,228,400

Fiscal Responsibility



In 2023, Moody's Investors Service, a well-known credit rating agency, announced that it had upgraded Benton County's credit rating to Aa1 from Aa2. The Aa1 rating is one of the top ratings within Moody's Investors Service credit rating scale. The Aa1 rating is one notch from Moody's highest rating within Moody's Investors Service Credit Rating scale.

"I believe the upgraded credit rating reflects the County's strong financial position and highlights its commitment to responsible fiscal management," said Benton County Chief Financial Officer Rick Crager. "This upgrade is a testament to Benton County's ability to meet its financial obligations and enhances credibility in the financial markets, enabling access to favorable borrowing terms and greater opportunities for economic growth and development that will help the County in the future."

Major Elements of the Budget

Budgetary allocations and initiatives demonstrate Benton County's commitment to addressing critical needs, enhancing community services, and ensuring the overall well-being and prosperity of its residents.

Additional Mental Health Support: The budget set aside \$7.7 million from state and federal resources to establish a new Crisis Center, which will provide essential mental health services.

American Rescue Plan Act (ARPA) Funding: A total of \$9.1 million in new federal resources, combined with \$9.1 million from the previous biennium, was allocated for ARPA projects. Out of the \$18.2 million total, \$14 million (78%) will be utilized to support various initiatives, such as addressing negative economic impacts, responding to public health issues, maintaining and improving infrastructure, and filling gaps lost in public sector revenue.

County Courthouse and District Attorney's Office: Through state funding amounting to \$31.2 million, supplemented by County resources generated from a General Obligation Bond, new facilities for a County Courthouse and District Attorney's Office will be constructed.

Enhancing Public Safety and Justice System: The budget included the establishment of a pre-trial program, as recommended in the Justice System Improvement Assessment report. To address increased needs in patrol and corrections, the Sheriff's Office has added four new positions, ensuring continued excellence in maintaining overall public safety in the County.

Community Development Block Grant Program: Three separate grants totaling \$985,000 were secured to support the Community Development Block Grant Program. These funds assisted the community to recover from the impacts of the pandemic, providing support in areas such as food, childcare, and rental housing.

Health Department and Emergency Operation Center: The Health Department's budget for 2021-23 included the addition of 4.0 full-time equivalent staff members to implement a Children and Families Outpatient Mental Health Program. Additionally, a federal grant of \$1.0 million, combined with a County match of \$333,333, was awarded for the establishment of a COVID-19 Emergency Operation Center.

Facilities and Transportation: The Facilities budget included the rehabilitation of the Kalapuya Building and accounts for the debt service requirement of outstanding bonds supported by department facility space charges. Furthermore, the budget reflected increased Highway Apportionment revenues, projecting an increase from \$500,000 to \$1,000,000 per biennium through the 2025-27 period, following the approval of a transportation-funding package by the Oregon legislature in 2017.

Department Consolidation: The Natural Areas and Parks Department and Fair Department were consolidated to form the Natural Areas, Parks & Events Department, streamlining operations and improving efficiency.

Benton County Board of Commissioners



The Benton County Board of Commissioners guides the development and progress of Benton County through policy decision-making. They oversee various departments and services, allocating and managing the County's budget to support essential initiatives. Through community engagement and public meetings, they foster transparency and inclusivity. The Board also advocates for the County's needs at the state and federal levels, securing funding for projects that enhance residents' well-being.

Benton County by the Numbers

Community Development

Population as of July 1, 2022: **97,630**



16,209 Outside urban growth boundaries



78,456 Inside urban growth boundaries

679 Square Miles



676 Land



3 Water

Benton Area Transit



60,443 BAT lift rides
18,347 Commuter bus rides
39,023 Hours of service provided
606,339 Miles of service provided

Sheriff's Office



18,235 Total calls for service in 2022
8,103 Calls deputies responded to

Juvenile



997 Juvenile clients served
122 Juvenile referrals

Assessment

1,878 Physical Reappraisals Between July 1, 2021 and May 24, 2023

Converted business personal property program to paperless and successfully implemented an e-filing system for the 2023 tax year.

District Attorney



Crimes processed by District Attorney's Office:
2021: **6,024**
2022: **5,419**



Victims Served Annually:
2021: **2,201**
2022: **2,306**



Services to Victims Annually:
2021: **43,650**
2022: **40,911**



Scheduled Court Appearances:
2021: **22,041**
2022: **23,440**



Natural Areas, Parks & Events

1,500 Total acres
24.3 Total trail miles
37 Campsites
4 Boat launches
6 Picnic shelters
309 Picnic shelter reservations
106 Beazell Education Center rentals
78 Alsea Guard Station rentals
26,525 County Fair & Rodeo attendance
2 New restrooms
1 New playground (total 4)

Human Resources



524 Employees
4,919 Job applications received
333 New hires



Health Department

Developmental Diversity

574 People enrolled in case management
26% Youth **74%** Adult
100% In stable housing
10,000+ Case Management Contacts

Behavioral Health

3,600 Total patients
51% at Benton County office
21% via Telehealth
18% at Community locations

Mental Health Crisis Response

3,380 Encounters
FY 22-23: 1,812 encounters with 1,006 patients
FY 21-22: 1,568 encounters with 897 patients

Women, Infants, & Children (WIC Nutrition)

1,606 Participants
908 Families

Communicable Diseases

19,288 COVID-19 case reports
1,259 Non-COVID-19 communicable disease cases
1,125 Individual Sexually Transmitted Illnesses
(89% of non-COVID-19 communicable diseases)

Environmental Health Program

919 Food vendor and restaurant licenses issued
339 Temporary food vendor licenses issued
66 Food complaints investigated
112 Pools and spas inspected
214 Pools and spas licensed

Tobacco Retail Licenses

51 Licenses issued
51 Routine inspections
6 Remediation discussions (*no formal violations*)
50 Minimum Legal Sale Age inspections
8 Formal violations with civil penalties

Public Health Immunization Program

Over **60** onsite vaccination clinics
Over **162** COVID-19 clinics
Over **21,000** COVID-19 vaccinations
28 COVID-19 clinics for the unhoused
13 Monkey Pox clinics



Community Health Centers of Benton & Linn Counties

9,236 Primary care clinic patients served
Nearly **80%** of kids **3-6** years old had annual wellness visits in 2022
Exceeded adolescent immunization goal with **58%** immunized in 2022
5,232 Dental clinic patients served

Community Health Centers Bridge Healthcare Gaps



The Community Health Centers of Linn and Benton County provided support during the pandemic, adapting to healthcare needs while maintaining primary care, and offering a range of services from dental care to medical assistant training. The health centers launched a Medical Assistance Training Program and were recognized by the Oregon Health Authority for the Community Health Worker Training Hub program. The dental program expanded services in Lebanon and was awarded grant funding for an expanded practice dental hygienist at the Lincoln Health Center. The program also re-established the School-Based Sealant and Fluoride Program in all Benton and East Linn County elementary and middle schools, received annual funding to collaborate with Strengthening Rural Families and Love, INC to aid those needing dental care, and expanded dental hygiene services in Albany.



Public Works

Fleet

100 Best Fleet Award

314 Internal vehicles and equipment serviced

841 External vehicles and equipment serviced

Facilities

15 County office buildings

Over **240,000** square feet of office space maintained

County roads

273 Miles of paved

167 Miles of gravel

Local access roads (Public Roads)

21 Miles of paved

48 Miles of gravel

Road districts

11 Road districts

Bridges

102 County bridges & large culverts

3 Public road bridges

Utility service districts

3 Water systems

3 Sewer systems



Records & Elections

5 Elections

60,473 Registered voters

7,494 New registrants

26,880 Voter registration updates

216,600 Ballots mailed to voters

111,112 Ballots returned by voters

109,110 Ballots accepted and tallied

3,412 Passport applications accepted

787 Passport renewals

3,228 Passport photos taken

854 Marriage licenses issued

5 Domestic partnerships registered

7,317 Dogs currently registered

2,652 New dog licenses

4,507 Renewal dog licenses

27,518 Real property & Lien instruments recorded

15,706 Real property and lien instruments submitted electronically

Fleet Crew Excellence



The Benton County Fleet Crew was awarded 4th place out of thousands in the Americas in the Best Public Fleets program competition. The Fleet team resides in the Public Works Department where they maintain and repair a wide array of vehicles and equipment.

The crew improved its ranking, from 9th place in 2022 to 4th place in 2023. The program aims to promote improvement and innovation in the fleet industry. Fleet Manager Keith Nicholson expressed that it is an honor to receive this recognition. Sustainability Coordinator Sean McGuire highlighted the fleet program's contribution to achieving sustainability goals. Board Chair Pat Malone expressed pride in the fleet crew's consistent recognition and commitment to excellence as one of the best fleet crews.

Benton County Environmental Health Program



The Benton County Environmental Health Program oversees the regulation of groundwater well systems, septic system installation and repair, animal bite investigations, and the inspection of facilities that require a state license. This includes restaurants, mobile food carts, hotels, pools, spas, organizational camps, retail tobacco outlets, and recreational vehicle parks. The program also inspects childcare facilities, the food service in public schools, as well as the food service in Greek Life housing at Oregon State University. Environmental Health also conducts investigations into foodborne illnesses and complaints.

“Our team of professionals comprises environmental health specialists registered with the state, administrative support personnel, a retail tobacco sales specialist, and a climate adaptation specialist,” said Scott Kruger acting environmental health program manager. “We take pride in serving the residents of Benton County and being available to assist them every day. Our program provides education and support to our community, ensuring compliance with state public health laws.”

Justice System Improvement Program



The Justice System Improvement Program (JSIP) is a multi-year initiative that began with a detailed 2018 assessment. The plan involves the development of a number of new facilities as well as expanded mental health and behavioral health crisis programs and services. The vision is to balance treatment and accountability to transform lives, ensure safety, and strengthen the community.

Strategic Communications

Benton County strives to provide transparent, engaging, and community-focused communication with tailored messages for diverse demographics. Using a multi-channel approach including social media, website, media, listservs, and events we aim to inform community members with timely and accurate information. Using strategic communication planning and coordinated strategies, the long-term vision is to build trust and community relationships with effective communication

“We regularly assess and adapt our communication strategies to ensure we remain responsive to the needs of the community members we serve,” said Benton County Public Information Officer Cory Grogan.

Partnerships with Elected Officials



Benton County visited or received visits from Senator Ron Wyden, Senator Jeff Merkley, retired Representative Peter DeFazio, Representative Val Hoyle, Senator Sara Gelser Blouin, and Representative (House Speaker) Dan Rayfield and staff. These officials have helped champion crucial projects like the Benton County Crisis Center and other initiatives. The collaboration between Benton County and elected officials has been instrumental in driving positive change and addressing critical issues affecting the community.

The partnership between Benton County and elected officials exemplifies the positive impact that can be achieved through effective collaboration and mutual support. By leveraging the expertise and resources of elected officials, Benton County has been able to directly benefit its residents and foster a thriving, inclusive community.

Equity, Diversity, & Inclusion

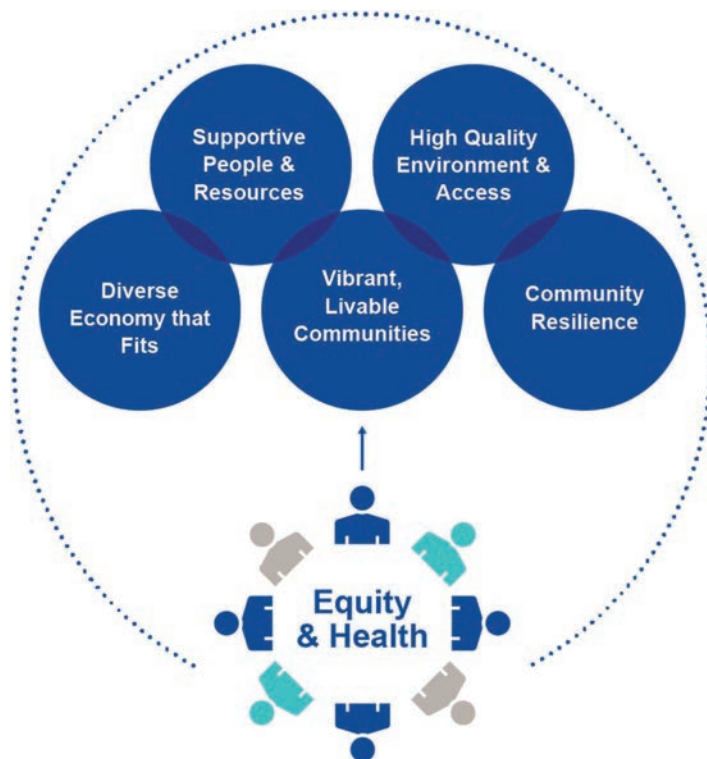


Benton County is committed to supporting an inclusive environment and creating equitable access to resources and opportunities for all County residents and visitors. We recognize that the strength and resiliency of a community are directly tied to the availability and accessibility of resources and opportunities for all individuals, regardless of race, disability, religious practices or beliefs, gender, sexual orientation, age, or socioeconomic background.

The County's mission to ensure access, equity, and inclusion in Benton County's services, policies, practices, and procedures relies heavily on our commitment to foster a community where everyone feels valued, included, respected, and safe. This includes, but is not limited to, recruitment and retention of a workforce that is representative of the community members we serve and an ongoing commitment to implementing equitable and inclusive principles in our work. We value the importance of employing staff who possess valuable lived experiences to ensure our workforce is culturally and linguistically responsive and leverages diversity to promote innovation and positive outcomes for the people we serve. With equity and inclusion at the forefront of our work, and in partnership with our community, Benton County is committed to cultivating a community where all residents have the same opportunities to thrive.

Sustainability

In 2016, Benton County initiated the 2040 Thriving Communities Initiative to foster public trust, align operational efforts with long-term vision, and prepare for the future. Led by community leaders, the initiative identified Core Values by engaging with thousands of community members over two years. These Core Values now serve as guideposts for the County's initiatives, goals, and activities in recent biennium budgets. Benton County is dedicated to sustainability, fiscal responsibility, efficiency, environmental stewardship, and promoting health and equity for all.



Transitioning to Renewable Energy



Transitioning to renewable energy is one of the ways Benton County is addressing the climate crisis. This 112 kilowatt solar array was installed on the Law Enforcement Center (180 NW 5th Street in downtown Corvallis) in 2021 with funding from Pacific Power's Blue Sky Program and Energy Trust of Oregon. It is one of five renewable energy projects Benton County has installed to date.

Benton County's goal is to reduce its greenhouse gas emissions to 50% of 2010 levels by the year 2030 and to be net-zero by 2050.

Departments at a Glance

Assessment

The Assessment Department assesses all properties in Benton County as of January 1 of each year. The department administers special programs such as special assessments, senior deferral, veteran and active duty military exemptions, enterprise zones, and various other property tax exemptions. It is also responsible for reviewing taxing district budgets; maintaining County property maps; computing tax rates for districts; and insuring the distribution of the tax levies.

Community Development

The Community Development Department houses the Building Division and Planning Division. The Building Division is responsible for administering the building permit and inspection program in accordance with State building, electrical, plumbing, mechanical and manufactured dwelling setup specialty codes. The Planning Division is responsible for managing the Comprehensive Land Use Plan and administering the County's zoning regulations and long range land use planning. The Community Development Department also oversees implementation of the Solid Waste and Water Quality Programs.

Financial Services

Financial Services is responsible for budgeting, accounting services, collection of property taxes, treasury management and financial advice to Administration and the Board of Commissioners. The department develops and monitors internal controls used to protect County assets and provides risk management services by securing liability and property insurance for the County. The department also develops and manages the County's biennial budget as well as the budgets for eight county service districts. Financial Services is also responsible for managing the preparation and execution of the County budget.

Health Services

Benton County Health Services encompasses the Health Department and Community Health Centers of Benton and Linn Counties, working towards a vision of engaged communities and blended services achieving better health. The Community Health Centers of Benton and Linn Counties provide patient-centered primary medical care that focuses on the whole person, including physical, mental, and oral health care. Health Department divisions include:

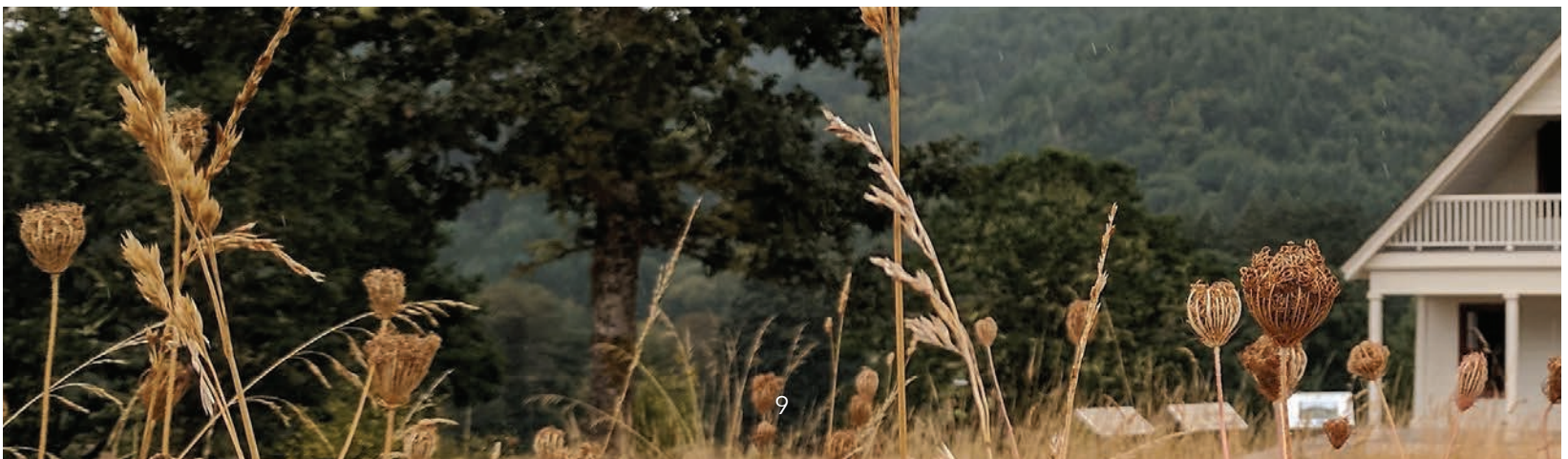
Public Health strives to create community conditions that help reduce health disparities so that everyone has an equal chance for a long and healthy life.

Behavioral Health provides high-quality adult and family services delivered by trained professionals that focus on recovery, independence, and skill-building for people with mental health and substance use issues.

Developmental Diversity provides support for children and adults with intellectual and developmental disabilities, offering coordination of services, connection to community resources, access to supports, protective services, and more.

Human Resources

Human Resources is a strategic partner in building a highly skilled, diverse, and motivated team of employees working together to meet community member needs. Human Resources provides the following services for the County: recruitment, personnel policies, employee records management, training, employee relations, labor contract administration, new employee orientation, position classification and compensation, and benefits administration.



Information Technology

The Information Technology Department provides a full spectrum of quality information and communications systems and support to assist other departments in achieving County strategic objectives and in innovating future solutions. Information Technology business functions and service areas include service desk, network engineering, administration and infrastructure; systems administration and data center operations; applications, database, and programming services; business analysis services; telecommunications; end user training; information security and availability; web and graphic design; geographic information services; disaster recovery planning & services; and technology innovation strategy and leadership.

Juvenile Department

The Juvenile Department protects the community through prevention and control of juvenile delinquency. It operates under a balanced approach of accountability, community safety, and competency development. This is met with a continuum of care that includes supervision, support and rehabilitation services to youth and families.

Natural Areas, Parks & Events

The Benton County Natural Areas, Parks and Events (NAPE) Department serves Benton County residents by providing access to natural, historic, and recreational areas and conserving, restoring and developing parkland investments. The department manages 12 parks, natural areas, and boat landings; outdoor education and recreation; habitat conservation; prairie conservation; firewood program; Crystal Lake Cemetery; Alsea River rental cabin; Salmonberry Campground; Beazell Memorial Forest and Education Center; and County trails.

NAPE also manages and maintains the Benton County Event Center and Fairgrounds that is home to the annual Benton County Fair and Rodeo.

Public Works

The Public Works Department oversees the Surveyor's Office, Roads Division, Engineering Services, Facilities Division, Special/Rural Public Transportation, and the Motor Pool and Shop, and assists the Board of Commissioners on issues related to the utility and service districts. The Surveyor's Office files property line adjustment surveys, manages partition and subdivision plats, and oversees the public land corner restoration program and the County road list.

The Road Maintenance Division maintains 273 miles of hard surfaced roads and 167 miles of gravel roadways throughout Benton County and is responsible for surface/sign/traffic marking, vegetation, and bridges and drainage systems. Engineering Services is responsible for the transportation system design and planning, pavement management program, construction management, and site development review. The Special/Rural Public Transportation program provides transportation options for persons with disabilities, persons older than 60 years, underserved populations, and rural communities.

Records & Elections

This department administers all Federal, State, County, City, and Special District elections held in Benton County. Maintaining voter records, printing and distributing ballots, publication of County Voters' Pamphlets and tabulation of votes cast. Additionally, this department serves as the repository for all property ownership records and lien filings. Marriage Licenses are issued, Domestic Partnerships are registered and dog licensing records are entered here. Also staffing the Property Value Appeal Board, the Department Director serves as the appointed County Clerk and this office is a designated U.S. Passport application acceptance facility.



National Crime Victims' Rights Week



Each year, Benton County recognizes National Crime Victims' Rights Week. April 23-29 was National Crime Victims' Rights Week (NCVRW) in 2023. It is a meaningful initiative aimed at promoting victims' rights and raising awareness about the challenges they face. To commemorate NCVRW, the Benton County District Attorney's Office organized a ceremony at the Benton County Courthouse in Corvallis on April 24th.

ROTC Cadets Honor Veterans with Flag Raising at Historic Benton County Cemetery



On May 23, 2023, Oregon State University Army, Air Force, Navy, and Marine ROTC Cadets raised U.S. flags on the grave sites of those who served and were laid to rest at the historic pioneer Crystal Lake Cemetery.

"It's a historic cemetery with almost every aspect of our county's history represented, including the Veterans who were laid to rest here," said Shane Galloway, Benton County's Natural Areas Parks and Events (NAPE) Maintenance Manager. "We manage this with a very small budget, and it takes quite a bit of work to maintain it. We have volunteers who spend hundreds of hours here each year trying to keep up the cemetery."

The land for the Crystal Lake Cemetery was deeded to Corvallis Masonic Lodge #14 in 1860, and cemetery operations and management were transferred to Benton County in 2001. A walk through the Cemetery reveals some of the most prominent names known to Benton County, Oregon State University, and Corvallis, including Joseph Avery, General Thomas Jones Thorp, Benjamin Lee Arnold, and other Veterans being honored this Memorial Day.

"There's so much history here for our region; some of the most prominent families in Benton County history are represented here," said Jesse Ott, NAPE Deputy Director.

Thanks to the hard work of County employees and volunteers the site has been well maintained preserving a connection to Benton County's past. Last Memorial Day it was the Veterans resting at Crystal Lake Cemetery receiving a symbolic honor with U.S. flags raised at their burial sites.

Offices with Elected Officials

District Attorney's Office



DA John M. Haroldson

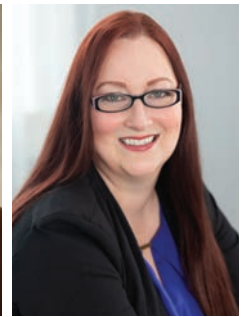
The District Attorney's Office represents the state government and is responsible for the prosecution of criminal offenses in Benton County. Divisions in the office include criminal, family law, child support enforcement, medical examiner, and victim services. The District Attorney is elected at-large to a four-year term.



Xan Augerot

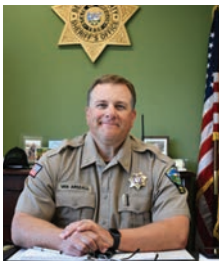


Pat Malone



Nancy Wyse

Sheriff's Office



Sheriff
Jef Van Arsdall

The Sheriff's Office provides professional public safety services with integrity and accountability. Services include animal control, civil process, concealed handgun licensing, courthouse security, emergency management, jail operations, law enforcement, patrol, investigations, parole & probation, and search & rescue. The Sheriff is elected at-large to a four-year term.

Benton County Board of Commissioners Office

The Benton County Board of Commissioners include Pat Malone, chair; Nancy Wyse, commissioner; and Xan Augerot, commissioner. Commissioners oversee all functions of County government services and set the budgets for the Sheriff's Office and District Attorney's Office. They act as executives, overseeing County operations.

Crisis Center Groundbreaking



On June 14, 2023, the Benton County Commissioners and dignitaries gathered to break ground on the new Benton County Crisis Center in Corvallis. The center will provide voluntary walk-in treatment and support for individuals in mental health crisis. It is funded by \$7.7 million from state and federal sources, including Oregon state general funds and American Rescue Plan Act funds. The Crisis Center aims to offer immediate assistance, prevent the escalation of crises, and save lives. It will be staffed by the Benton County Health Department's crisis team and is part of the Justice System Improvement Program.

Benton County “Talks Trash”



The Benton County “Talks Trash” Solid Waste Process Workgroup hosted a community open house on April 4. Community members who supported the event volunteered thousands of hours working with County staff and key stakeholders to provide recommendations about the future of sustainable materials management and solid waste and disposal in Benton County.

The workgroup delivered a final report to the Benton County Board of Commissioners that provided recommendations to the Board about specific solid waste topics such as landfill size/capacity/longevity, sustainable materials management plan, past land use application conditions, legal issues, land use review, and community education.

Benton County Attends Sustainability Fair



Employees from the Benton County Community Development and Health Departments joined Commissioner Pat Malone and members of the County Sustainability Program at the annual Sustainability Fair & Town Hall. The Fair was waste-free, with more than 45 exhibits highlighting local sustainability initiatives. A Town Hall followed the Fair, where County Commissioner Malone and others discussed various sustainability initiatives. The Corvallis Sustainability Coalition event returned to its in-person format in 2023, which had been on hiatus since 2019.

Benton Breakfast Brings Employees Together



The Benton Breakfast is an annual event to recognize Benton County employees for their dedication and service to the Benton County community. This year’s breakfast was held May 11 at the Benton County fairgrounds and featured a superhero theme. Outstanding individuals were recognized with public service awards.







**Benton
County**
OREGON

*At your service,
every day.*

**Subscribe to news updates:
pioinfo@bentoncountyor.gov**

Follow us on social media @BentonCoGov

4500 SW Research Way • Corvallis, OR 97333

- Assessment 541-766-6855**
- Board of Commissioners 541-766-6800**
- County Administration 541-766-6800**
- Community Development 541-766-6819**
- District Attorney 541-766-6815**
- Elections 541-766-6756**
- Event Center and Fairgrounds 541-766-6521**
- Finance and Property Tax 541-766-6808**
- Health Services 541-766-6835**
- Human Resources 541-766-6081**
- Juvenile 541-766-6810**
- Natural Areas and Parks 541-766-6871**
- Public Works 541-766-6821**
- Records 541-766-6831**
- Sheriff 541-766-6858**

Cover photo by Porter Raab